



# Tillbridge Solar

**Tillbridge Solar**  
Statutory consultation webinars – June and July 2023





# Logistics

Question box and button

The screenshot displays a Zoom meeting interface. On the left, a dark grey panel shows the participant name 'Matthew Addy - Tillbridge Solar Community Relations Team' with a small 'MA' icon. Below the name is a large circular profile picture containing the letters 'MA'. At the bottom of this panel is a microphone icon. The bottom of the screen features a navigation bar with icons for Help, Microph..., Camera, Settings, Record, Share, Display, Leave, Apps, Questions, and Chat. On the right side, a white 'Questions' panel is open. It has a title 'Questions' and a close button. The panel contains the text: 'Nobody has asked a question yet', 'Your attendees can send questions here. Since you have enabled the private questions feature, attendees won't see each other's questions', and 'You can ask questions once the event has started'. At the bottom of the panel is a blue button labeled 'Ask a new question'. Two green arrows point from the text 'Question box and button' to the 'Questions' panel and the 'Ask a new question' button.

# The Tillbridge Solar team







# Tillbridge

Solar

Background





# About Tillbridge Solar

A new solar and energy storage scheme within Lincolnshire, spanning across the local authority boundaries of West Lindsey and Bassetlaw.

Generation capacity exceeding 50MW, providing enough clean energy to power approx. 300,000 UK homes.

1,400 hectares (ha):

- approx. 900 ha for the solar PV panels and infrastructure
- approx. 500 ha for environmental mitigation and enhancement

Connect to the National Grid at Cottam Substation via approx. 16km of underground electricity cables.

A Bilateral Connection Agreement with National Grid to allow 500MW of renewable energy to be transferred in to and out of its Cottam substation.

## Need for the Scheme

UK climate change targets to achieve net zero by 2050 and ensure the energy supply remains secure, reliable and affordable.

Energy Security Strategy (April 2022) - the UK's solar capacity needs to increase five-fold by 2035 to meet legally binding targets on net zero. Reinforced by draft National Policy Statement for Energy and the sustained growth of solar.

This would increase the total generation capacity from 14 gigawatts (GW) today to around 70GW.

Powering Up Britain (March 2023) – Government commitment to net zero and reiterated the need for both rooftop and ground-mounted solar to achieve national targets.

Decommissioning of Cottam power station provides additional grid connection capacity.

# Consultation and engagement so far



Introduced our emerging proposals in 2022:

- July 2022 - held a series of collaboration workshops, with a report summarising these available on our website.
- Oct 22 – newsletter to local community & stakeholders

Feedback from workshops, along with our ongoing engagement, has shaped our plans.

These have now developed and are being presented as part of our statutory consultation.





# Tillbridge Solar

Our proposals

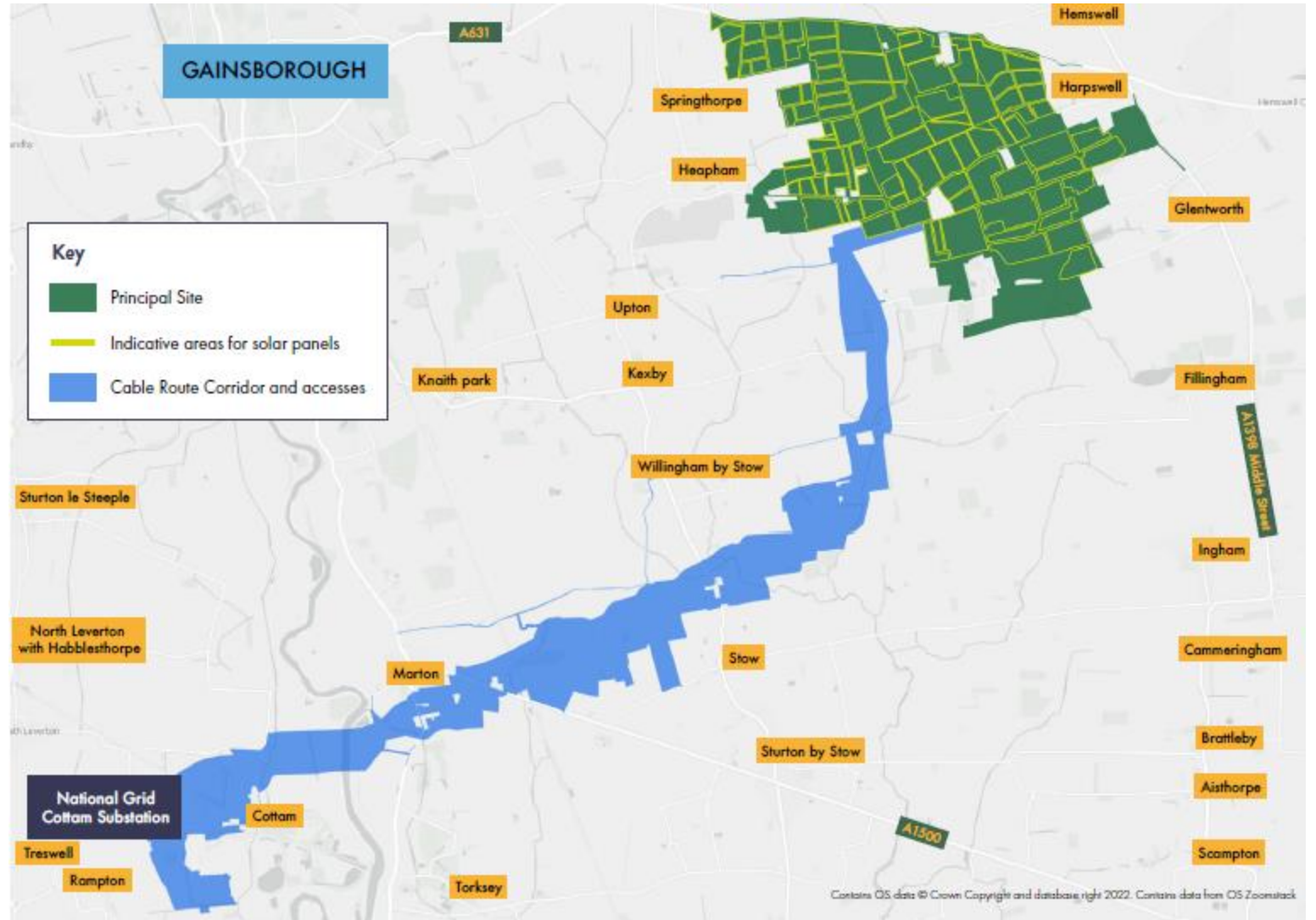


# Location

Approx. five kilometres east of Gainsborough and approx. 13 kilometres north of Lincoln.

The Principal Site', where the ground mounted solar PV, electrical substations and energy storage facilities would be located; 1,400 ha; land to the south of Harpswell Lane (A631), to the west of Middle Street (B1398) and largely to the north of Kexby Road and to the east of Springthorpe.

Cable route corridor; approximately 16km linking the Principal Site to the national grid at Cottam substation.

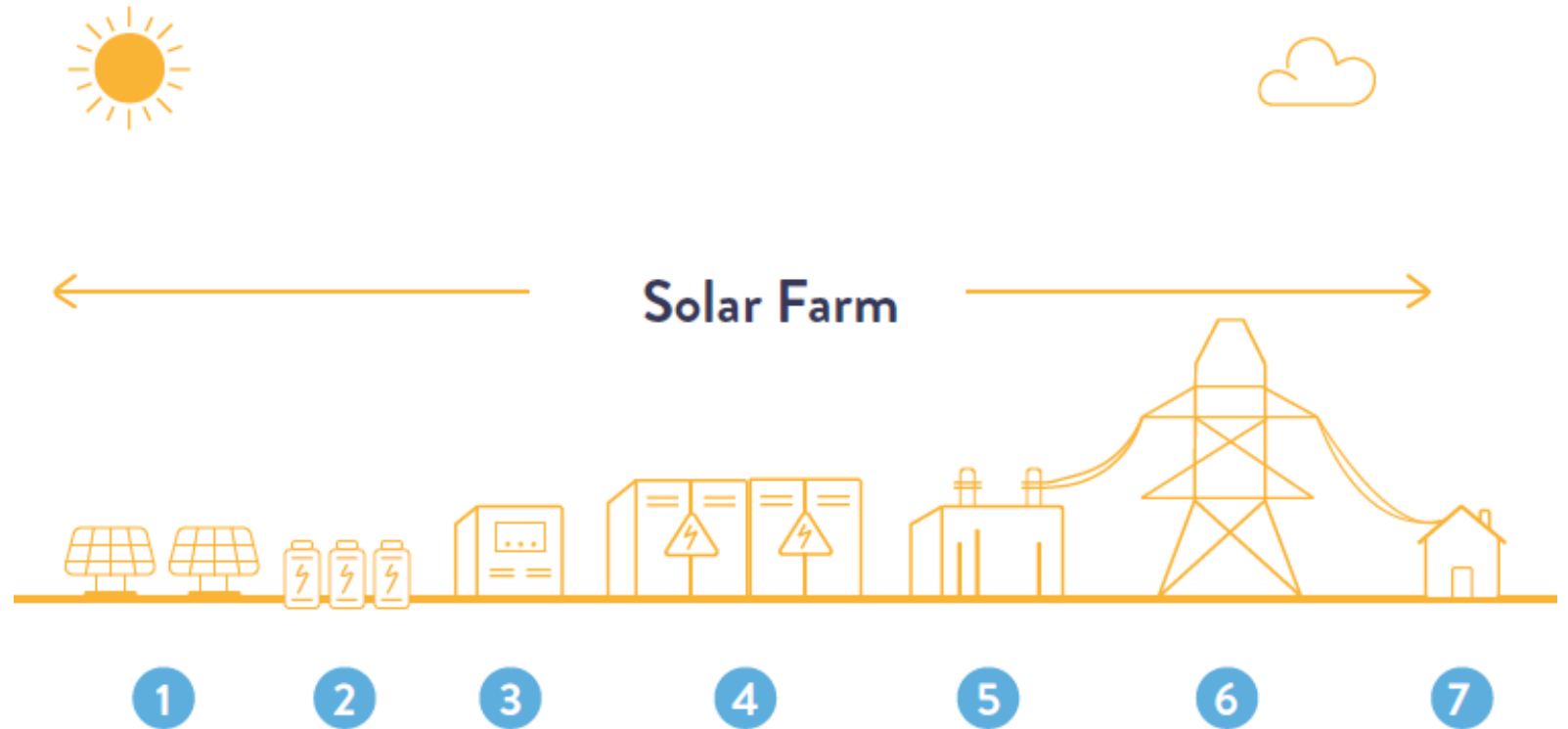




# Principal Site main infrastructure

- Solar PV panels (also known as solar modules);
- Solar stations (inverter, transformer and switchgear);
- Battery Energy Storage System (BESS);
- Battery Direct Current (DC)/DC convertors;
- On-site cabling (within Principal Site); On-site substations;
- Solar farm control centre;
- Equipment storage;
- Fencing, security and lighting;
- Site access and access tracks, including four points of access for the Principal Site off the main highway network and internal access tracks within the Principal Site;
- Surface water drainage;
- Electricity connection to National Grid at Cottam substation via cable route corridor.

Illustrative example of the Scheme (not to scale)

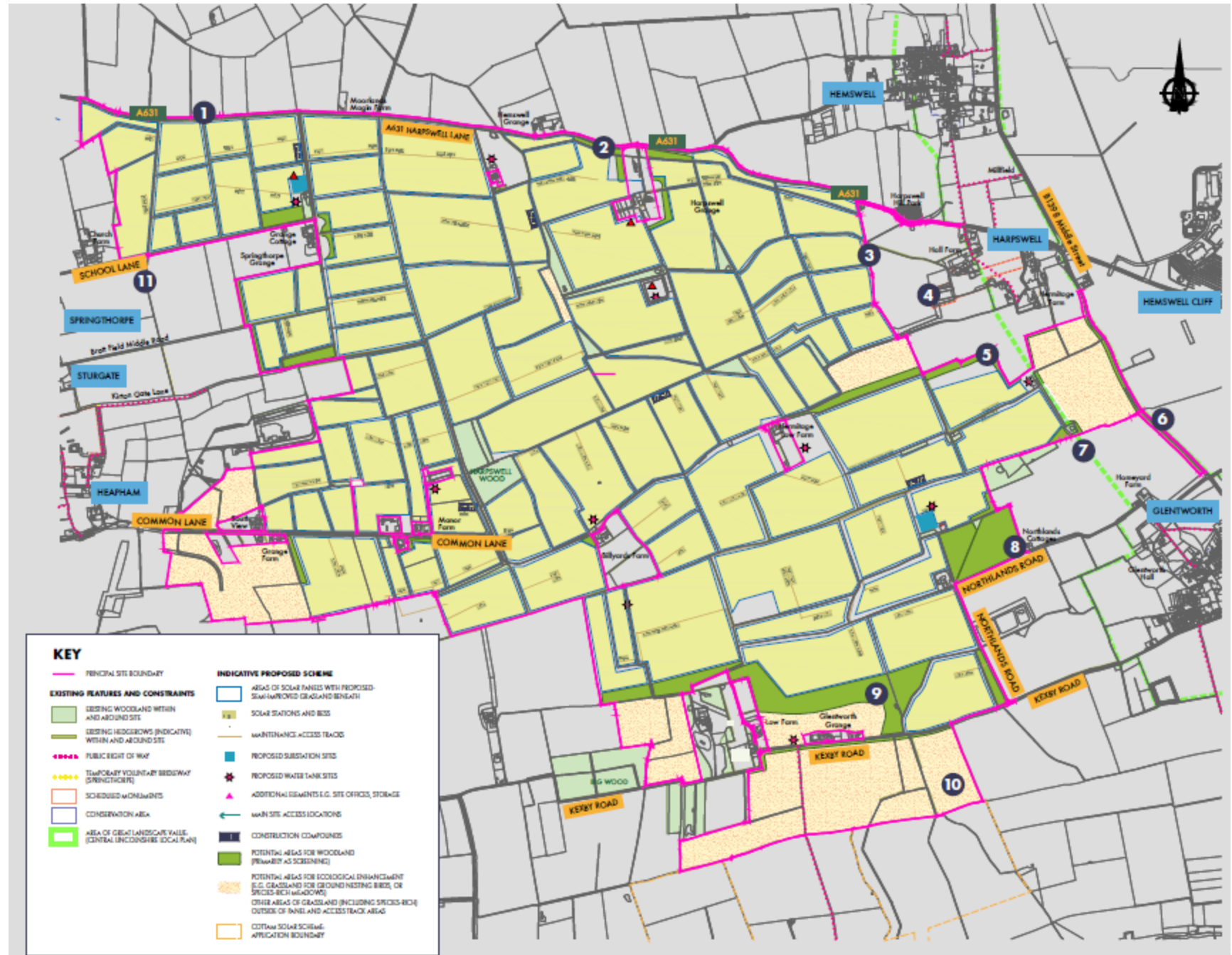




# Illustrative site layout

We are now presenting our initial designs for the proposed layout of the principal site as shown by our indicative site layout plan.

This plan can be found on our website, in our materials and at our face-to-face consultation events.



# Construction, operation and decommissioning



Subject to consent:

- Construction could start in Q3 2025
- Operation from Q4 2027

Construction one continuous phase for 24 months  
Working hours 7am -7pm Monday to Friday and 7am – 1pm Saturday

We will prepare a Construction Traffic Management Plan (CTMP)

Four access points:

- Three along the A631
- One on the B1398 Middle Street

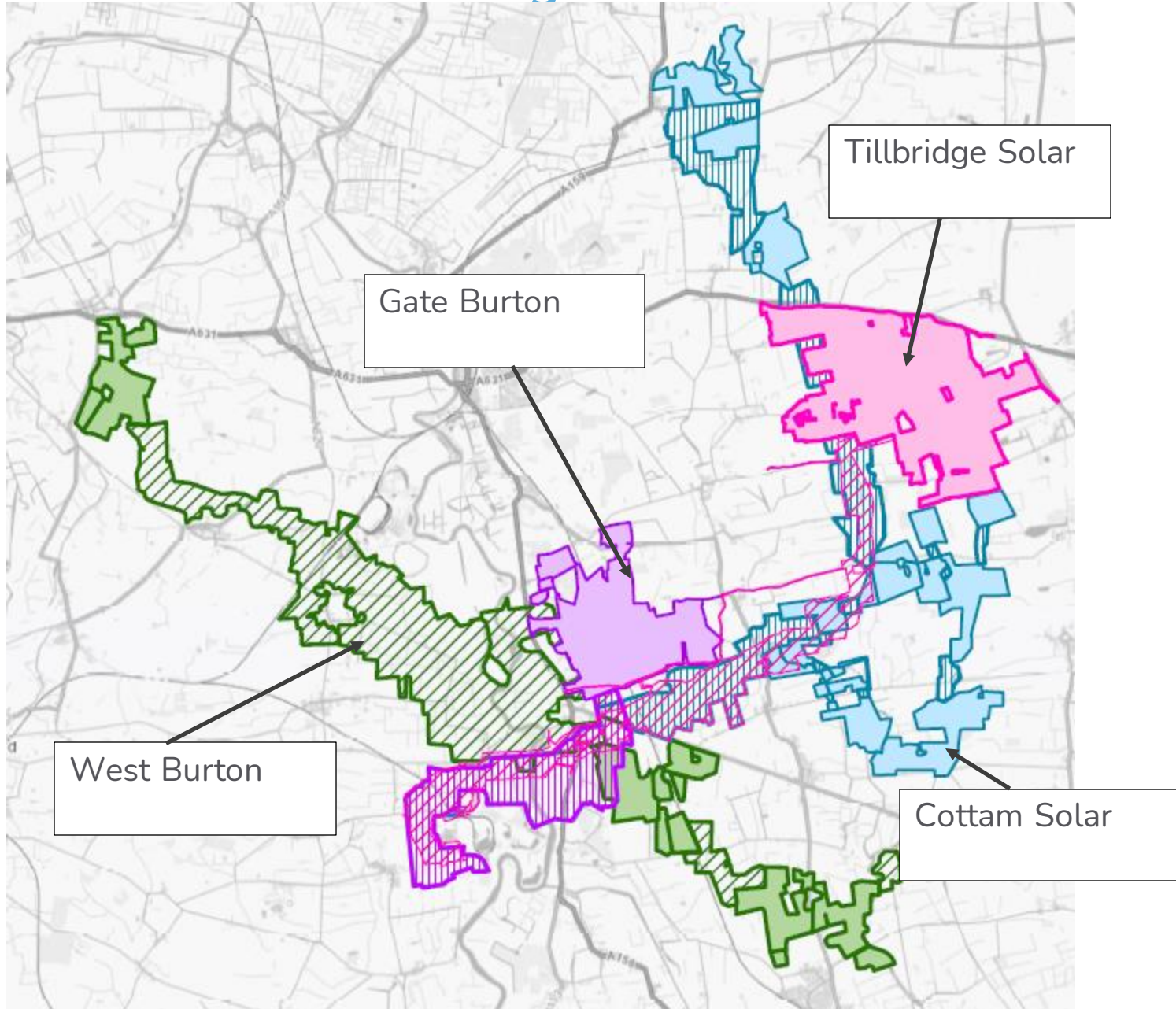
Operation – activity would be minimal

Generate clean energy for approx. 40-60 years

Decommissioning – 12-24 months



## Collaborative working



We have been refining our plans to identify opportunities for collaborative working with the other developers of solar projects within the area with respect to the cable route corridor connecting to National Grid's Cottam substation.

We are continuing to work to:

- Understand how the corridors might sit alongside each other
- Minimise land take
- Minimise environmental impacts
- Minimise disruption during construction



## Environmental Impact Assessment (EIA)

EIA identifies the potential effects on the environment, people and local communities. These effects can be positive or negative.

We are working to reduce the negative effects of the Scheme and provide mitigation and enhancements where possible.

The preliminary EIA findings are reported within the Preliminary Environmental Information Report (PEI Report).

The PEI Report has been prepared for the purposes of statutory consultation.

A non-technical summary (NTS) of the PEI Report will also be available.



# Environmental Impact Assessment (EIA) (cont.)

The PEI Report covers the following topic areas:

- Chapter 1 Introduction
- Chapter 2 Scheme Location
- Chapter 3 Scheme Description
- Chapter 4 Alternatives and Design Evolution
- Chapter 5 EIA Methodology
- Chapter 6 Air Quality
- Chapter 7 Climate Change
- Chapter 8 Cultural Heritage
- Chapter 9 Ecology and Nature Conservation
- Chapter 10 Flood Risk, Drainage and Surface Water
- Chapter 11 Human Health
- Chapter 12 Landscape and Visual Amenity
- Chapter 13 Noise and Vibration
- Chapter 14 Socio-economics and Land-use
- Chapter 15 Transport and Access
- Chapter 16 Other Environmental Topics
- Chapter 17 Cumulative Effects
- Chapter 18 Summary of Significant Environmental Effects





## Community benefits

Biodiversity enhancement & community benefit fund being explored.

Suggestions to date have included funding towards:

- Improvements to existing community facilities, e.g. village halls and sports facilities
- Provision of electrical vehicle charging points
- Subsidised solar PV panels for community use and lower cost energy
- Grants for broadband and wider improvements
- Educational visits and wider education/apprenticeship opportunities

Could be managed independently; we've spoken with:

- Lincolnshire Community Foundation
- Nottinghamshire Community Foundation

We are considering the possibility of coordinating with other developers on these localised benefits.

As part of the consultation we welcome views on management of the fund and local projects and initiatives we could support.



# Indicative Scheme timeline

**Summer 2022 - ongoing**

Initial engagement with stakeholders, including collaboration workshops

**Spring 2023**

Publication of our Statement of Community Consultation (SoCC) and ongoing development of our EIA

**Winter 2023**

Anticipated submission of DCO application to the Planning Inspectorate for public examination

**Autumn 2025**

Anticipated start of construction

**September 2022**

EIA Scoping Request submitted to the Planning Inspectorate

**Spring - Summer 2023**

Statutory consultation to be held with community and technical stakeholders, including sharing the findings of our PEI Report

**2024 - 2025**

DCO examination and decision





Tillbridge  
Solar

Statutory consultation – how to take part





## Our statutory consultation

Our statutory consultation:

- Six weeks from **Tuesday 30 May 2023 to Tuesday 11 July 2023.**
- We want to hear views on our detailed design proposals for the Scheme.
- Including our preliminary environmental information and how we are planning to minimise the impact of the Scheme.
- Feedback will help us to finalise our detailed proposals for our application, which we expect to submit to the Planning Inspectorate (PINS) later this year.



# How to take part in our consultation

## *Attend a public consultation event*

Venue	Date	Times
Online webinar (please get in touch to register)	Wednesday 7 June	6:30pm to 8pm
Glentworth Village Hall, Stoney Lane, Glentworth, Lincolnshire, DN21 5DF	Wednesday 14 June	2:30pm to 7pm
Willingham Village Hall, High St, Willingham by Stow, Gainsborough, DN21 5JZ	Saturday 17 June	10am to 2pm
Sturton by Stow Village Hall, High St, Sturton by Stow, Lincoln, LN1 2AE	Thursday 22 June	1:30pm to 5:30pm
Corringham Village Hall, 10 Middle St, Corringham, Gainsborough, DN21 5QR	Friday 30 June	12pm to 4pm
Rampton Village Hall, Manor Grounds, Rampton, Retford, Nottinghamshire DN22 0JU	Saturday 1 July	10am to 2pm
Hemswell and Harpswell Village Hall, Maypole Street, Hemswell, Lincolnshire, DN21 5UL	Thursday 6 July	2:30pm to 6:30pm
Online webinar (please get in touch to register)	Monday 10 July	6:30pm to 8pm

# How to take part in our consultation

*View information*

On our website [www.tillbridgesolar.com](http://www.tillbridgesolar.com)

In person at the five local information points:

- West Lindsey District Council Office
- Lincoln Central Library
- Gainsborough Library
- Saxilby Library
- Retford Library

Materials available to collect at these locations include:

- feedback questionnaires
- consultation leaflets

Printed copies of the following will be available at each of these locations to inspect (but not take away):

- Statement of Community Consultation (SoCC)
- more detailed statutory consultation booklet
- PEI Report
- NTS



# Our materials – website and interactive map

Visit our documents library for a full suite of materials: <https://tillbridgesolar.com/documents-library>

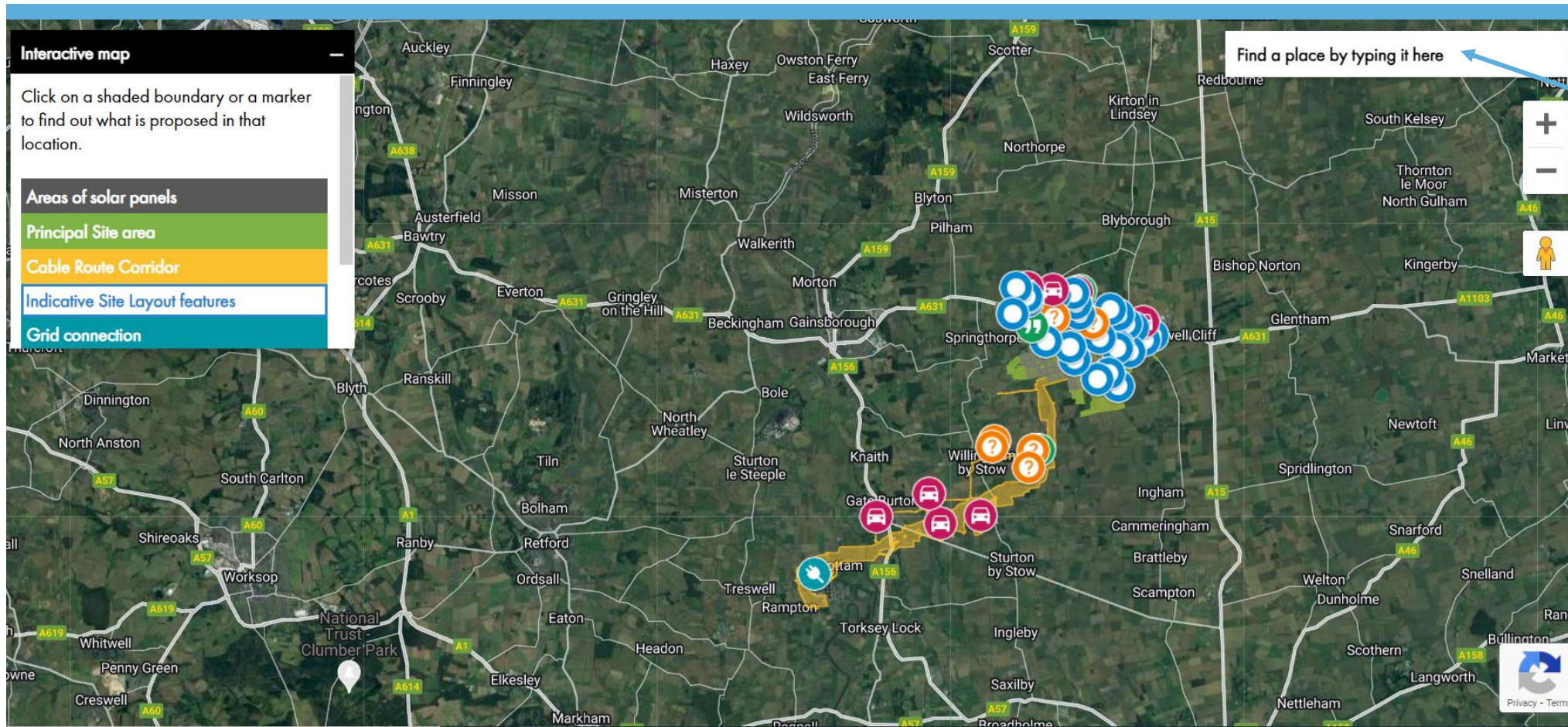
## 2023 - Statutory consultation documents

- ↳ Consultation leaflet
- ↳ Exhibition boards
- ↳ Frequently Asked Questions document
- ↳ Project information booklet
- ↳ Statement of Community Consultation (SoCC)
- ↳ Navigating our Consultation Plans
- ↳ Feedback questionnaire
- ↳ Section 47 Notice
- ↳ Non-Technical Summary (NTS) of the PEI Report
- ↳ Section 48 Notice

## Preliminary Environmental Information Report

# Our materials – website and interactive map

Can be found on the website at: <https://tillbridgesolar.com/the-scheme/>



Input  
postcode  
and areas  
of  
interest



# Providing feedback online

Can be found on the website at: <https://tillbridgesolar.com/the-scheme/>

## Tillbridge Solar Statutory Consultation Feedback Questionnaire

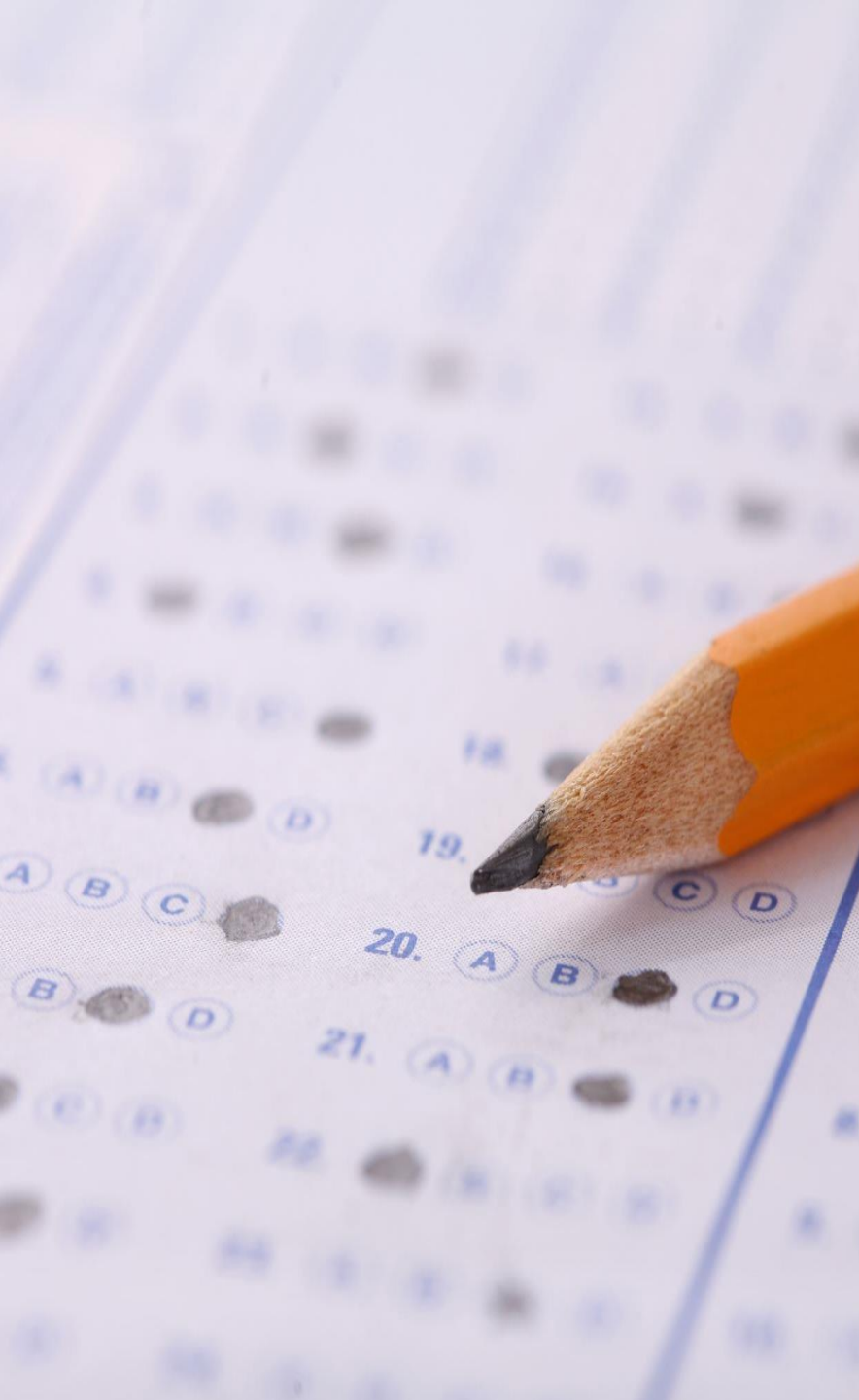
30 May – 11 July 2023

Please complete this feedback questionnaire to let us know your views on our proposals for Tillbridge Solar. The deadline for responses is **23:59 on Tuesday 11 July 2023**.

We are developing proposals for a new solar and energy storage scheme (the "Scheme"), which would involve the installation of solar photovoltaic (PV) generating panels and on-site energy storage facilities in Lincolnshire. The Scheme would also include infrastructure for connection to the National Grid at Cottam substation in

This feedback questionnaire sits alongside our wider suite of consultation materials, including a Project Information Booklet and Preliminary Environmental Information (PEI) Report, and details how you can respond to the proposals set out in the consultation materials. All of our materials can be found on our website ([tillbridgesolar.com/documents-library](https://tillbridgesolar.com/documents-library)). Our website also contains details of how you can access hard copy information, should you wish to do so, as part of this consultation.





## Providing feedback

Provide feedback either online or in writing, by:

- Going to our website and completing an online feedback questionnaire.
- Collecting a questionnaire from one of our consultation events, information points or on request (by contacting the community relations team by email, phone or post) .
- Returning a completed questionnaire to us at one of our events, by email or by post.
- Providing free form comments by email or post.

**The deadline for comments is 23.59 on 11 July 2023**



## How we will use feedback and next steps

Once the consultation has closed at 23:59 on Tuesday 11 July 2023, we will review all comments and suggestions that have been received during the consultation period.

We will take time to consider and have regard to feedback when making further refinements to our proposed design and developing our planned mitigation measures.

We will set out a summary of the responses given in a Consultation Report, with details on how feedback has shaped and influenced the proposals.

This report will form part of our application for a Development Consent Order (DCO) – sent to PINS on behalf Secretary of State for Energy Security and Net Zero: More info at:

<https://infrastructure.planninginspectorate.gov.uk>



## Keeping in touch

- We are committed to engaging openly with all stakeholders. Come along to our events to speak to the team in person. You can also request separate meetings.
- Through out the consultation period and after, people can get in touch using the details below:
  - Email: [info@tillbridgesolar.com](mailto:info@tillbridgesolar.com)
  - Freephone: 0800 046 9643
  - Freepost: **FREEPOST TILLBRIDGE SOLAR**
  - Website: [www.tillbridgesolar.com](http://www.tillbridgesolar.com)



Tillbridge  
Solar



Questions